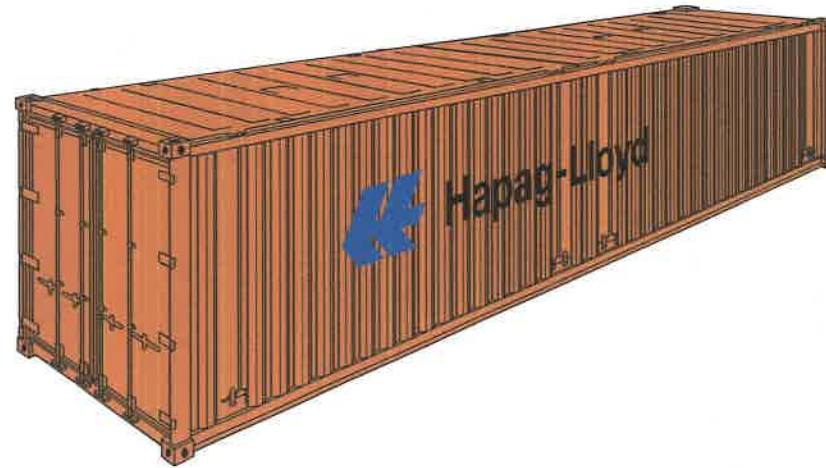


Hardtop Container

40'

ISO Size Type Code: 42U6

- This container type has been designed and developed by Hapag-Lloyd.
- The 40' hardtop container has particularly been constructed for:
 - long loads which cannot be transported in the 20' hardtop container
 - heavy loads
 - high and excessively high loads
 - loading, e.g. by crane, through roof opening and door side.
- With the roof removed and the door header swung out, it is much easier to load cargo using a crane via the door side.
- Provided with lifting devices by forklift truck or crane. The weight of the single steel roof comes within the limits of approx. 450 kg (990 lbs).
- In case your cargo has overheight the roof sections can be lashed to a sidewall inside the container using only some 13 cm (5¹/₈") of space.
- Floor Height 170 mm - 5mm (Ground level to interior floor surface)
- If required, we can provide disposable tarpaulins for the transport which can



- be fastened to the walls on the outside using lashing devices.
- The hardtop container provides many lashing devices to fasten your goods. The lashing devices on the corner posts and on the longitudinal rails of the roof and floor are capable of bearing loads of up to 2,000 kg (4,410 lbs) each, and those in the middle of the side walls up to 500 kg (1,100 lbs) each. Lashing to the side walls can only be done after the roof has been closed.
- The roof can easily lifted by hand 70 mm (2³/₄"), using the roof locking devices so that the door-header can be swung out without removing the roof.
- This container type has been designed for heavy loads. Whilst considering the technical data (including the permissible spreaded load limitations) please bear in mind the prevalent weight restrictions for land transport.
- For further information please ask for our brochure "The Hardtop Container".

Hardtop Container

40'

Construction	Inside Dimensions				Weights			Capacity	Hapag-Lloyd Serial Number	Foot- note
	Length	Width	Height		Max. Gross kg lbs	Tare kg lbs	Max. Payload kg lbs			
			Middle mm ft	Side mm ft				m ³ cu.ft		
8'6" high	mm ft	mm ft	mm ft	mm ft	kg lbs	kg lbs	kg lbs			
	12 020 39'5 1/4"	2 342 7'8 1/8"	2 388 7'10"	2 313 7'7"	30 480 67 200	4 700 10 360	25 780 56 840	67,2 2374	FANU 462 100 – 462 399	1)
Steel container with corrugated walls, wooden floor and removable steel roof	12 020 39'5 1/4"	2 342 7'8 1/8"	2 388 7'10"	2 313 7'7"	30 480 67 200	4 700 10 360	25 780 56 840	67,2 2374	FANU 462 400 – 463 999 HLXU 465 000 – 466 249	1)
	12 020 39'5 1/4"	2 345 7'8 1/4"	2 380 7'9 5/8"	2 300 7'6 1/2"	30 480 67 200	4 700 10 360	25 780 56 840	65,3 2306	HLXU 467 950 – 467 999	2)

Remarks:

The 40' hardtop has a removable turnbuckle positioned dead centre between both top rails. This may reduce the cargo height, if left in position and not stored.

- 1) Provided with passive vents.
- 2) Special design, roof locking clips.

Roof and door openings please see page 22.

High Cube Hardtop Container

40'

ISO Size Type Code: 45U6

- This container type has been designed and developed by Hapag-Lloyd.
- The 40' hardtop container has particularly been constructed for:
 - long loads which cannot be transported in the 20' hardtop container
 - heavy loads
 - high and excessively high loads
 - loading, e.g. by crane, through roof opening and door side.
- With the roof removed and the door header swung out, it is much easier to load cargo using a crane via the door side.
- The roof can be removed by using a fork-lift. The weight of the steel roof is approx. 450 kg (990 lbs) each section.
- In case your cargo has overheight the roof sections can be lashed to a sidewall inside the container using only some 13 cm (5 1/8") of space.
- Floor Height 170 mm - 5mm (Ground level to interior floor surface)
- If required, we can provide disposable tarpaulins for the transport which can be



- fastened to the walls on the outside using lashing devices.
- The hardtop container provides many lashing devices to fasten your goods. The lashing devices on the corner posts and on the longitudinal rails of the roof and floor are capable of bearing loads of up to 2,000 kg (4,410 lbs) each, and those in the middle of the side walls up to 500 kg (1,100 lbs) each. Lashing to the side walls can only be done after the roof has been closed.
- The roof can easily be lifted by hand 70 mm (2 3/4"), using the roof locking devices so that the door-header can be swung out without removing the roof.
- This container type has been designed for heavy loads. Whilst considering the technical data (including the permissible spreaded load limitations) please bear in mind the prevalent weight restrictions for land transport.
- For further information please ask for our brochure "The Hardtop Container".

High Cube Hardtop Container

40'

Construction	Inside Dimensions				Weights			Capacity	Hapag-Lloyd Serial Number	Foot- note
	Length	Width	Height		Max. Gross kg lbs	Tare kg lbs	Max. Payload kg lbs			
			Middle mm ft	Side mm ft				m ³ cu.ft		
9'6" high	mm ft	mm ft	mm ft	mm ft	kg lbs	kg lbs	kg lbs			
	12 020 39'5 ¹ / ₄ "	2 342 7'8 ¹ / ₈ "	2 693 8'10"	2 618 8'7"	30 480 67 200	4 900 10 803	25 580 56 394	75,8 2 677	HLXU 467 000 – 467 299	
Steel container with corrugated walls, wooden floor and removable steel roof	12 021 39'5 ⁵ / ₁₄ "	2 346 7'8 ³ / ₈ "	2 695 8'10 ¹ / ₈ "	2 620 8'7 ¹ / ₈ "	30 480 67 200	4 900 10 803	25 580 56 394	76,0 2 684	HLXU 665 000 – 665 199	
	12 022 39'5 ⁵ / ₁₆ "	2 346 7'8 ³ / ₈ "	2 695 8'10 ¹ / ₈ "	2 620 8'7 ¹ / ₈ "	32 500 71 650	5 200 11 470	27 300 60 180	76,0 2 684	HLXU 665 200 – 666 949	

Remarks:

Roof with hinged rings for easy removal by a fork-lift truck.

Up to 21 lashing rings on each top longitudinal rail; particularly suitable for the transport of hanging garment equipment.

The 40' hardtop has a removable turnbuckle positioned dead centre between both top rails.

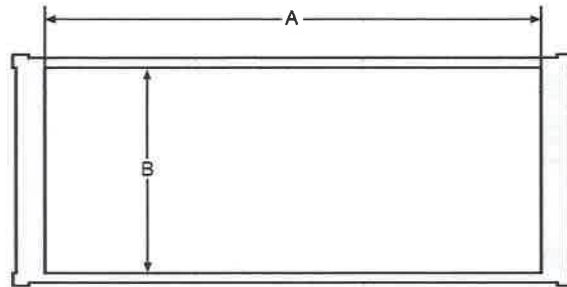
This may reduce the cargo height, if left in position and not stored.

Roof and door openings please see next page.

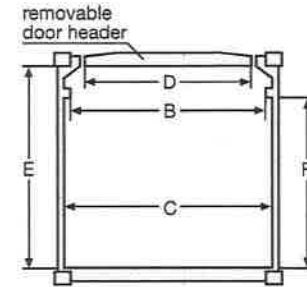
Provided with passive vents.

Roof and door openings of Hardtop Containers

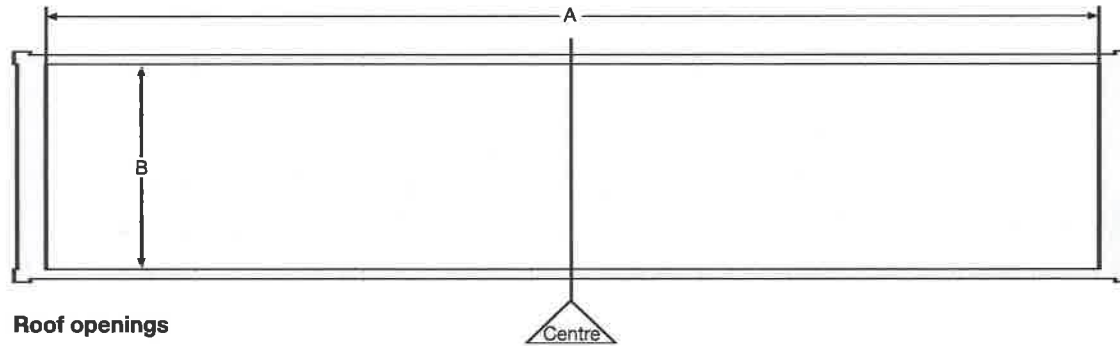
20', 40', 40'/9'6"



Roof openings



Door openings



Roof openings

Attention: Reduced inside height due to adjust bar, in the centre ~ -160 mm

Roof and door openings of Hardtop Containers

20', 40', 40'/9'6"

20' 8'6" high	Roof openings		Door openings			Roof lashed to sidewall					Hapag-Lloyd Serial Number	Foot- note
	Length	Width	Width		Height		Reduced Inside Width					
	A mm ft	B mm ft	C mm ft	D Swing header opening mm ft	B Between top rails mm ft	E Up to door header mm ft	F Up to top rail mm ft		Roof opening mm ft	Door opening mm ft		
5 590 18'4"	2 208 7'27/8"	2 336 7'8"	1 896 6'25/8"	2 208 7'27/8"	2 276 7'55/8"	2 220 7'3/8"	2 209 7'3"	2 142 7'1/4"	2 206 7'27/8"	FANU 260 200 – 261 399 HLXU 365 000 – 365 649		
5 590 18'4"	2 208 7'27/8"	2 336 7'8"	1 896 6'25/8"	2 208 7'27/8"	2 292 7'61/4"	2 220 7'3/8"	2 209 7'3"	2 142 7'1/4"	2 206 7'27/8"	FANU 261 400 – 261 799		
5 590 18'4"	2 208 7'27/8"	2 336 7'8"	1 896 6'25/8"	2 208 7'27/8"	2 275 7'23/4"	2 231 7'33/4"	2 215 7'31/8"	2 148 7'1/2"	2 212 7'3"	HLXU 365 650 – 365 949		
40' 8'6" high	11 724 38'51/2"	2 208 7'27/8"	2 336 7'8"	1 896 6'25/8"	2 208 7'27/8"	2 276 7'55/8"	2 220 7'3/8"	2 209 7'3"	2 142 7'1/4"	2 206 7'27/8"	FANU 462 400 – 463 999 HLXU 465 000 – 465 649	
	11 724 38'51/2"	2 208 7'27/8"	2 334 7'77/8"	1 882 6'21/2"	2 208 7'27/8"	2 290 7'61/8"	2 125 6'115/8"	2 205 7'23/4"	2 102 6'103/4"	1 996 6'61/2"	HLXU 467 950 – 467 999	

40' 9'6" high	Roof openings		Door openings			Roof lashed to sidewall					Hapag-Lloyd Serial Number	Foot- note
	Length	Width	Width		Height		Reduced Inside Width					
	A mm ft	B mm ft	C mm ft	D Swing header opening mm ft	B Between top rails mm ft	E Up to door header mm ft	F Up to top rail mm ft		Roof opening mm ft	Door opening mm ft		
11 724 38'51/2"	2 208 7'27/8"	2 336 7'8"	1 896 6'25/8"	2 208 7'27/8"	2 597 8'61/4"	2 525 8'33/8"	2 230 7'33/4"	2 163 7'11/8"	2 227 7'35/8"	HLXU 467 000 – 467 299		
11 724 38'51/2"	2 212 7'21/8"	2 340 7'81/8"	1 808 5'111/8"	2 212 7'31/8"	2 581 8'55/8"	2 523 8'33/8"	2 230 7'33/4"	2 161 7'11/8"	2 227 7'35/8"	HLXU 665 000 – 666 349		

Open Top Container

20'

ISO Size Type Code: 22U1



- Especially for
 - overheight cargo
 - loading from top side, e.g. by crane
 - loading from door side, e.g. with cargo hanging from overhead tackle
- Floor Height 170 mm - 5mm (Ground level to interior floor surface)
- Door header can be swung out on all open top containers

- If required, we can provide disposable tarpaulins. For fastening tarpaulins, lashing bars are available on the outside of the walls. Using one way tarpaulins requires the corner castings to be accessible.
- Fork-lift pockets for loaded containers.
- Numerous lashing devices on the top and bottom longitudinal rails and the corner posts.

Lashing devices have a permissible load of 1 000 kg (2 20 lbs) each.

- **Dimensions of roof and door openings please see page 29.**

Open Top Container

20'

Construction	Inside Dimensions				Weights			Capacity	Hapag-Lloyd Serial Number	Foot- note
	Length	Width	Height		Max. Gross kg lbs	Tare kg lbs	Max. Payload kg lbs	m ³ cu.ft		
			Middle mm ft	Side mm ft						
8'6" high	mm ft	mm ft	mm ft	mm ft	kg lbs	kg lbs	kg lbs	m ³ cu.ft		
	5 888 19'3 ³ / ₄ "	2 345 7'8 ¹ / ₈ "	2 365 7'9"	2 315 7'7 ¹ / ₈ "	30 480 67 200	2 250 4 960	28 230 62 240	32,0 1 130	HLXU 260 000 – 260 849	
Steel container with corrugated walls, wooden floor and removable tarpaulin	5 897 19'4 ¹ / ₈ "	2 350 7'8 ¹ / ₂ "	2 377 7'9 ¹ / ₂ "	2 347 7'8 ³ / ₈ "	30 480 67 200	2 350 5 180	28 130 62 020	32,5 1 148	CPSU 800 001 – 800 549 HLXU 260 850 – 261 599	
	5 895 19'4 ¹ / ₈ "	2 350 7'8 ¹ / ₂ "	2 380 7'9 ⁵ / ₈ "	2 340 7'8 ³ / ₈ "	32 500 71 650	2 250 4 960	30 250 66 690	32,5 1 148	HLXU 360 000 – 362 999	1)

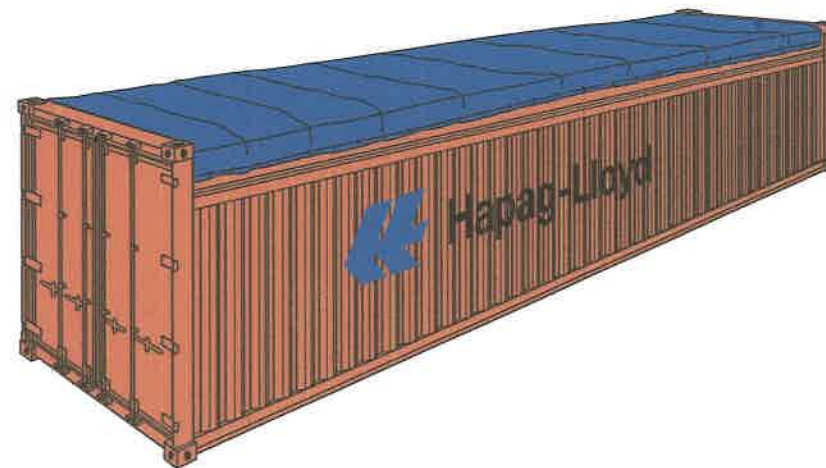
Remarks:

1) Concentrated load up increased from 4 tons per running meter in length (3'3³/₈"

Open Top Container

40'

ISO Size Type Code: 42U1



- Especially for
 - overheight cargo
 - loading from top side, e.g. by crane
 - loading from door side, e.g. with cargo hanging from overhead tackle
- Floor Height 170 mm - 5mm (Ground level to interior floor surface)

- Door header can be swung out on all open top containers
- Numerous lashing devices on the top and bottom longitudinal rails and the corner posts. Lashing devices have a permissible load of 1000 kg(2 205 lbs) each.

- Dimensions of roof and door openings please see page 29.

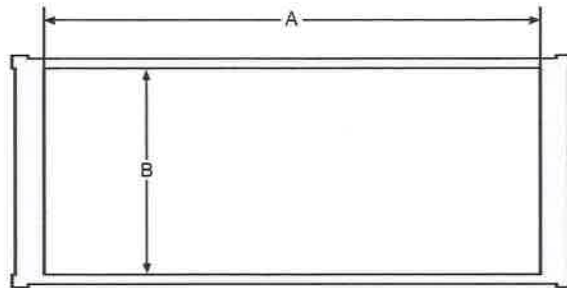
Open Top Container

40'

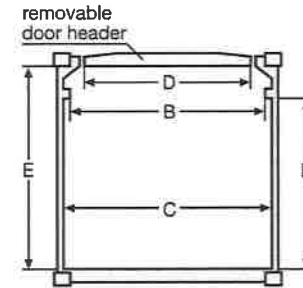
Construction	Inside Dimensions				Weights			Capacity	Hapag-Lloyd Serial Number	Foot- note
	Length	Width	Height		Max. Gross kg lbs	Tare kg lbs	Max. Payload kg lbs			
			Middle mm ft	Side mm ft				m ³ cu.ft		
8'6" high	12 029 39'5 1/2"	2 342 7'8 1/8"	2 376 7'9 1/2"	2 326 7'7 1/2"	30 480 67 200	3 810 8 400	26 670 58 800	65,5 2 310	HLXU 460 000 – 460 799	
	12 022 39'5 1/4"	2 345 7'8 1/8"	2 365 7'9 1/8"	2 315 7'7 1/8"	30 480 67 200	3 740 8 245	26 740 58 955	65,3 2 306	FANU 461 500 – 261 749	
Steel container with corrugated walls, wooden floor and removable tarpaulin	12 030 39'5 5/8"	2 350 7'8 1/2"	2 377 7'9 1/2"	2 347 7'8 3/8"	30 480 67 200	3 850 8 490	26 630 58 710	66,4 2 345	HLXU 460 800 – 462 119	
	12 029 39'5 1/2"	2 350 7'8 1/2"	2 380 7'9 5/8"	2 346 7'8 3/8"	32 500 71 650	4 050 8 929	28 450 62 721	66,5 2 350	HLXU 560 000 – 566 699	

Roof and door openings of Open Top Containers

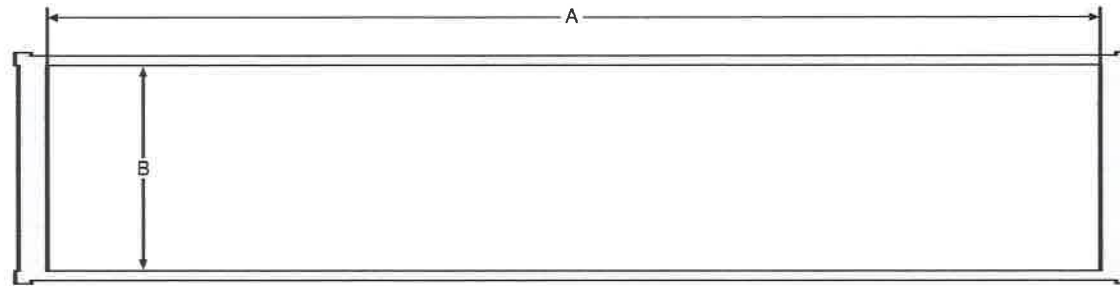
20', 40'



Roof openings



Door openings



Roof openings

Roof and door openings of Open Top Containers

20', 40'

20' 8'6" high	Roof openings		Door openings					Hapag-Lloyd Serial Number	Foot- note
	Length	Width	Width			Height			
	A	B	C	D Swing header openings	B Between top rails	E Up to door header	F Up to top rail		
mm ft	mm ft	mm ft	mm ft	mm ft	mm ft	mm ft	mm ft		
	5 360 17'7"	2 205 7'2 ³ / ₄ "	2 335 7'8"	1 880 6'2"	2 205 7'2 ³ / ₄ "	2 280 7'5 ³ / ₄ "	2 125 6'11 ⁵ / ₈ "	HLXU 260 000 – 260 849	
	5 338 17'6 ¹ / ₈ "	2 230 7'3 ³ / ₄ "	2 338 7'8"	1 902 6'2 ⁷ / ₈ "	2 230 7'3 ³ / ₄ "	2 280 7'5 ³ / ₄ "	2 231 7'1"	CPSU 800 001 – 800 549 HLXU 260 850 – 261 599	
	5 338 17'6 ¹ / ₈ "	2 230 7'3 ³ / ₄ "	2 338 7'8"	1 899 6'2 ⁷ / ₈ "	2 230 7'3 ³ / ₄ "	2 280 7'5 ³ / ₄ "	2 231 7'1"	HLXU 360 000 – 361 549	

40' 8'6" high	Roof openings		Door openings					Hapag-Lloyd Serial Number	Foot- note
	Length	Width	Width			Height			
	A	B	C	D Swing header openings	B Between top rails	E Up to door header	F Up to top rail		
mm ft	mm ft	mm ft	mm ft	mm ft	mm ft	mm ft	mm ft		
	11 544 37'10 ¹ / ₂ "	2 230 7'3 ³ / ₄ "	2 336 7'8"	1 885 6'2 ¹ / ₈ "	2 230 7'3 ³ / ₄ "	2 280 7'5 ³ / ₄ "	2 146 7'1 ¹ / ₂ "	HLXU 460 000 – 460 799	
	11 550 37'10 ³ / ₄ "	2 205 7'2 ³ / ₄ "	2 335 7'8"	1 880 6'2"	2 205 7'2 ³ / ₄ "	2 280 7'5 ³ / ₄ "	2 125 6'11 ⁵ / ₈ "	FANU 461 500 – 461 749	
	11 573 37'11 ⁵ / ₈ "	2 210 7'3"	2 338 7'8"	1 902 6'2 ⁷ / ₈ "	2 210 7'3"	2 292 7'6'1/4"	2 131 6'11 ⁷ / ₈ "	HLXU 460 800 – 362 119	
	11 552 37'10 ³ / ₄ "	2 230 7'3 ³ / ₄ "	2 340 7'8 ¹ / ₈ "	1 900 6'2 ¹³ / ₁₆ "	2 230 7'3 ³ / ₄ "	2 282 7'5 ³ / ₄ "	2 163 7'1'1/8"	HLXU 560 000 – 566 699	

Flat - All Types

20'

ISO Size Type Code: 8'6" high, 22P3, 22P8



- Especially for heavy loads and over-size cargo as well as project cargo.
- Fork-lift pockets for loaded containers.
- Numerous very strong lashing devices on the corner posts, longitudinal rails and on the floor or base ends. Lashing devices on the longitudinal rails have a permissible load up to 5 000 kg each.
- **Maximum payload can only be used if distributed over the total floor area of flatrack. If concentration of heavy load on a small part of floor area is required please contact your Hapag-Lloyd partner office for stowage advice.**
- Flats are delivered without stanchions. If stanchions are required please inform us upon booking.
- Collapsible flatracks, provided with spring assisted endwalls.
- Collapsible flatracks, provided with twistlocks to interlock 7 units into a 8'6" high pile.

Flat

20'

Construction	Inside Dimensions						Weights			Hapag-Lloyd Serial Number	Foot-note
	Length between panels mm ft	Length between posts mm ft	Width between posts mm ft	Width over bott side rails mm ft	Height floor to top face mm ft	Height of bottom mm ft	Max. Gross kg lbs	Tare kg lbs	Max. Payload kg lbs		
8'6" high											
Flat/Platform with flushfolding endwalls and softwood floor	6038 19'9 ³ / ₄ "	5638 18'6"	2 226 7'3 ⁵ / ₈ "	2 208 7'2 ³ / ₈ "	2 233 7'3 ⁷ / ₈ "	370 1'2 ¹ / ₂ "	40 000 88 184	2 940 6 482	37 060 81 702	HLXU 368 000 – 368 699	1)
	6038 19'9 ³ / ₄ "	5638 18'6"	2 226 7'3 ⁵ / ₈ "	2 194 7'2 ⁷ / ₈ "	2 233 7'3 ⁷ / ₈ "	370 1'2 ¹ / ₂ "	45 000 99 200	2 900 6 400	42 060 92 800	HLXU 368 700 – 369 499	1)2)
Steelframe with collapsible endwalls and softwood floor	5 950 19'6 ¹ / ₄ "	5 644 18'6 ¹ / ₈ "	2 224 7'3 ¹ / ₂ "	2 194 7'2 ⁷ / ₈ "	2 226 7'3 ⁵ / ₈ "	370 1'2 ¹ / ₂ "	33 000 72 752	2 850 6 238	30 150 66 469	HLXU 268 000 – 268 149	3)
Flat/Platform with flushfolding endwalls and softwood floor	6038 19'9 ³ / ₄ "	5638 18'6"	2 226 7'3 ⁵ / ₈ "	2 208 7'2 ³ / ₈ "	2 235 7'4"	370 1'2 ¹ / ₂ "	30 480 67 200	2 520 5 560	27 960 61 64	HLXU 268 500 – 268 599	
	6038 19'9 ³ / ₄ "	5612 18'4 ⁷ / ₈ "	2 225 7'3 ⁵ / ₈ "	2 210 7'3"	2213 7'3 ¹ / ₈ "	370 1'2 ¹ / ₂ "	34 000 74 950	2 740 6 040	31 260 68 910	HLXU 268 600 – 269 399	1)

Remarks:

- 1) Length between hinges at floor level: about 83mm less between posts
- 2) no stanchions pockets
- 3) collapsible but not flushfolding